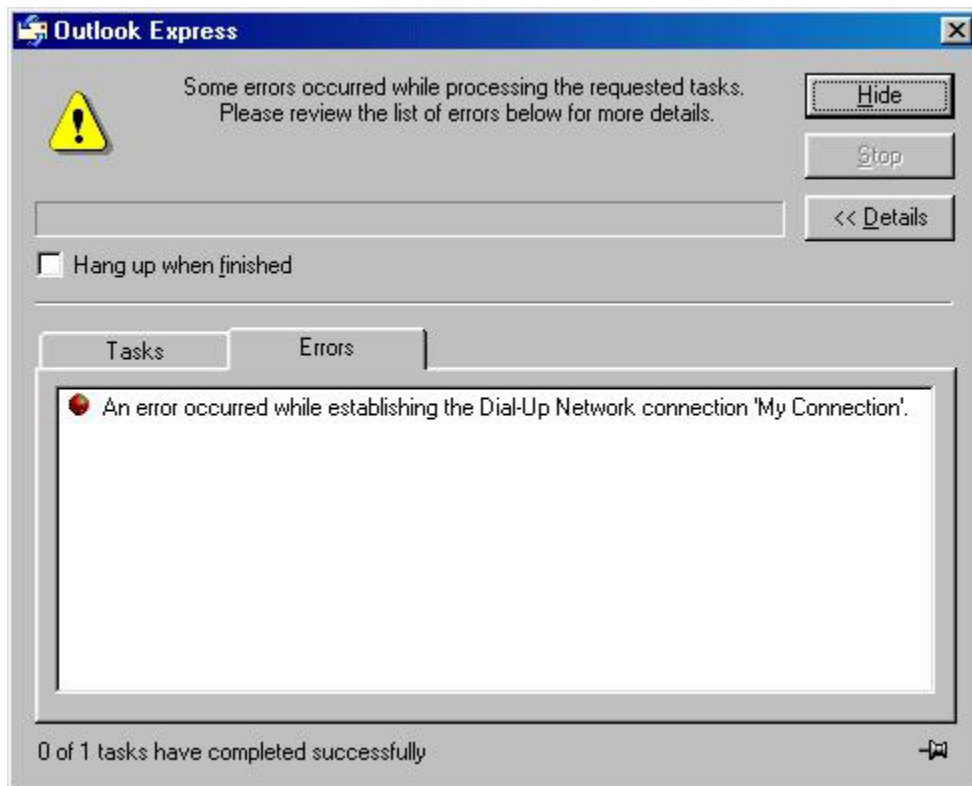
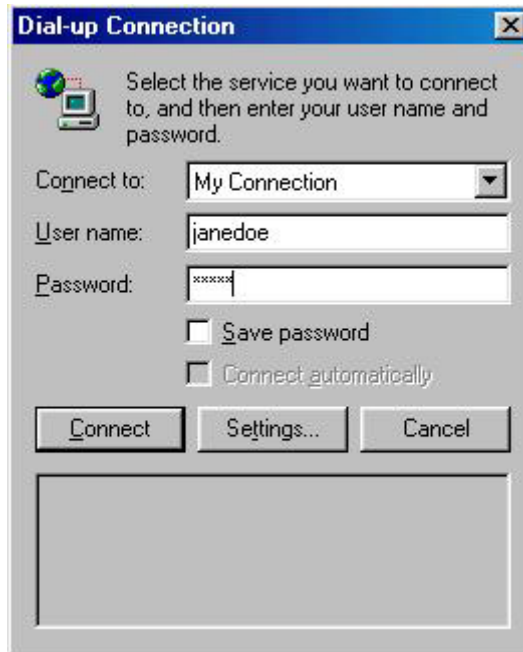
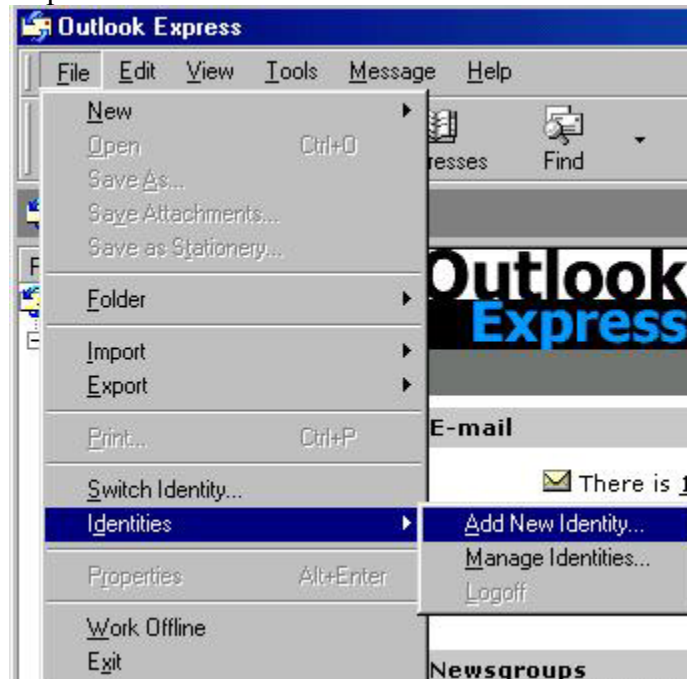


Setting up Multiple email account with Brightnet

1.) Open Outlook Express. Click **Cancel** or **Work Offline** when the dial-up connection box appears.



2.) Click File, Identities, Add New Identity... This brings up a windows labeled New Identity and asks for your name. For the example John Doe is used.

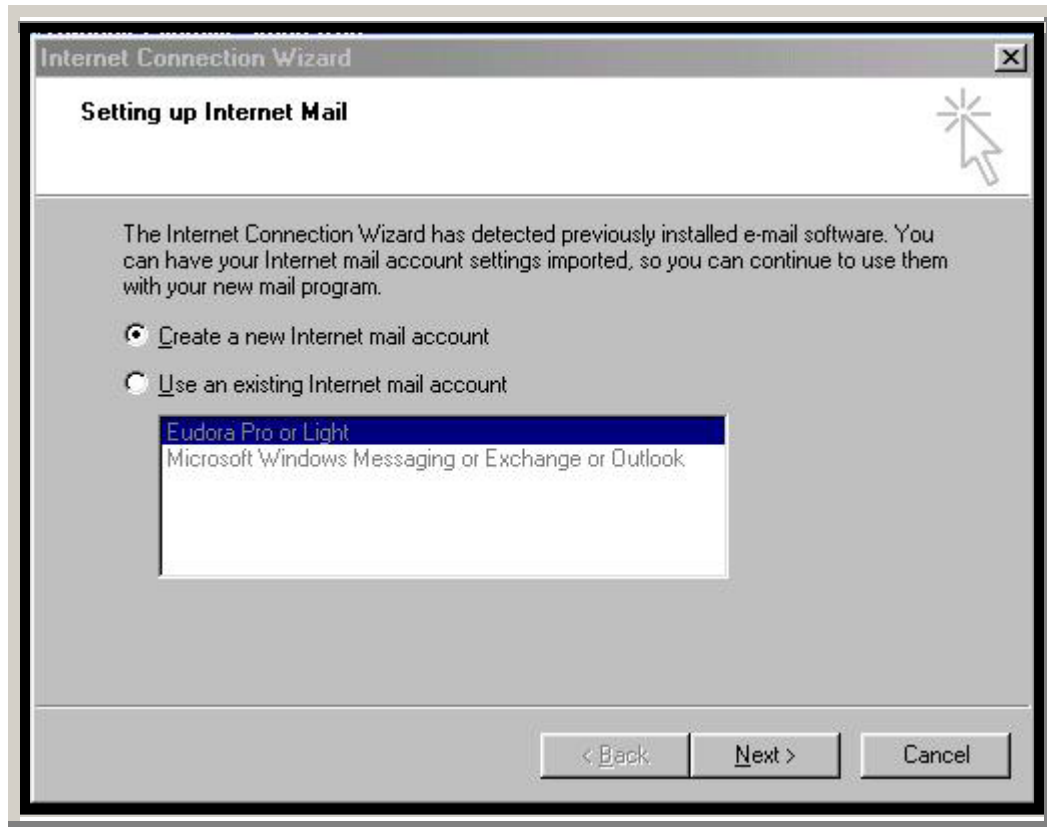


3.) Having a password for each identity is possible, but not necessary. If you do not want passwords for

each identity skip to step 4. Put a check in the box that says "Ask me for..." This will bring up a window asking you for your password, enter the password once in both boxes. Click Ok.

4.) Click Ok. You will be asked if you want to switch to the new identity now. Click Yes.

5.) This brings up the Internet Connection Wizard, Choose "Create A New Internet mail account" Click Next.



6.) Enter your Name, click Next choose "I already have an e-mail address that I'd like to use" and type in your email address. Click Next.

Internet Connection Wizard

Your Name

When you send e-mail, your name will appear in the From field of the outgoing message. Type your name as you would like it to appear.

Display name:

For example: John Smith

< Back Next > Cancel

Internet Connection Wizard

Internet E-mail Address

Your e-mail address is the address other people use to send e-mail messages to you.

I already have an e-mail address that I'd like to use.

E-mail address:

For example: someone@microsoft.com

I'd like to sign up for a new account from:

< Back Next > Cancel

7.) Set "My incoming mail server is a **POP3** server." In the box below "Incoming mail (POP3, IMAP or HTTP) server:" enter **pop.bnin.net** In the box below "Outgoing mail (SMTP) server:" enter **smtp.bnin.net** Click Next.

The screenshot shows the 'E-mail Server Names' dialog box in the Internet Connection Wizard. It has a blue title bar with the text 'Internet Connection Wizard' and a close button. The main title is 'E-mail Server Names'. Below the title bar, there is a text field for the incoming mail server type, which is set to 'POP3'. Below that is a text field for the incoming mail server name, containing 'pop.bnin.net'. Below that is a text field for the outgoing mail (SMTP) server name, containing 'smtp.bnin.net'. At the bottom, there are three buttons: '< Back', 'Next >', and 'Cancel'.

Internet Connection Wizard

E-mail Server Names

My incoming mail server is a server.

Incoming mail (POP3, IMAP or HTTP) server:

An SMTP server is the server that is used for your outgoing e-mail.
Outgoing mail (SMTP) server:

< Back Next > Cancel

8.) Account name will already have your username. Below it type in your password. Leave "Remember password" checked. Leave "Log on using Secure Password Authentication (SPA)" Un-checked. Click Next, then click Finish.

The screenshot shows the 'Internet Mail Logon' dialog box in the Internet Connection Wizard. It has a blue title bar with the text 'Internet Connection Wizard' and a close button. The main title is 'Internet Mail Logon'. Below the title bar, there is a text field for the account name, containing 'jdoe'. Below that is a text field for the password, containing 'xxxx'. Below the password field is a checked checkbox labeled 'Remember password'. Below that is a text field for the logon method, which is un-checked and labeled 'Log on using Secure Password Authentication (SPA)'. At the bottom, there are three buttons: '< Back', 'Next >', and 'Cancel'.

Internet Connection Wizard

Internet Mail Logon

Type the account name and password your Internet service provider has given you.

Account name:

Password:

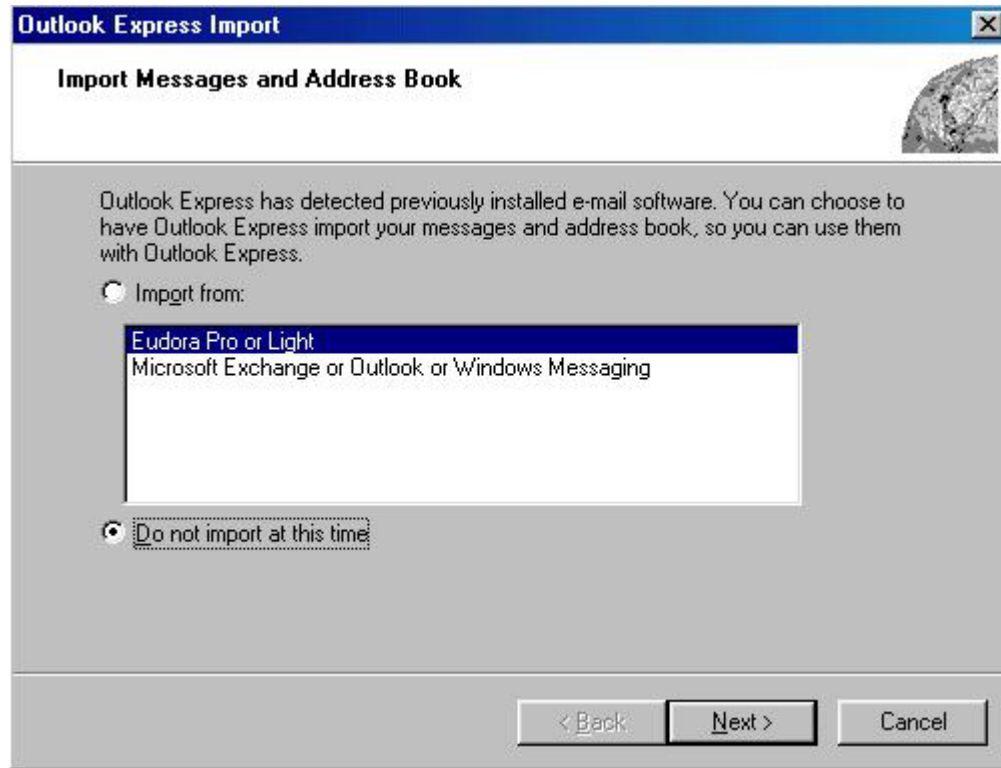
Remember password

If your Internet service provider requires you to use Secure Password Authentication (SPA) to access your mail account, select the 'Log On Using Secure Password Authentication (SPA)' check box.

Log on using Secure Password Authentication (SPA)

< Back Next > Cancel

9.) Choose "Do not import at this time." Click Next, then Click Finish.



10.) When you wish to exit Outlook Express click File, Identities, Logoff *username*. Otherwise the next time outlook starts it will automatically log into the account that was last used.