



Manual Internet Setup

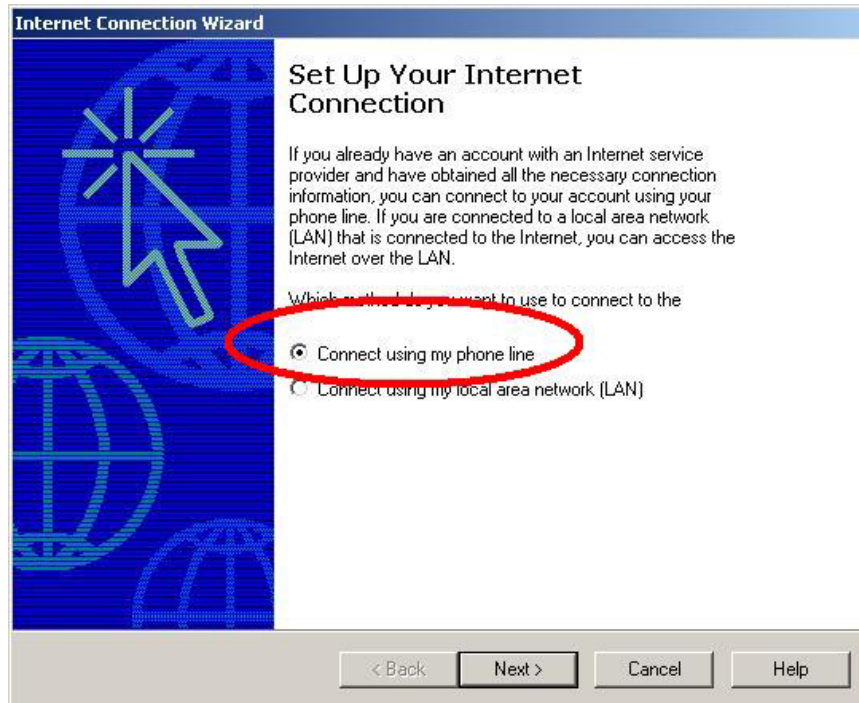
1. Click on the "Start" button and click on "Run".



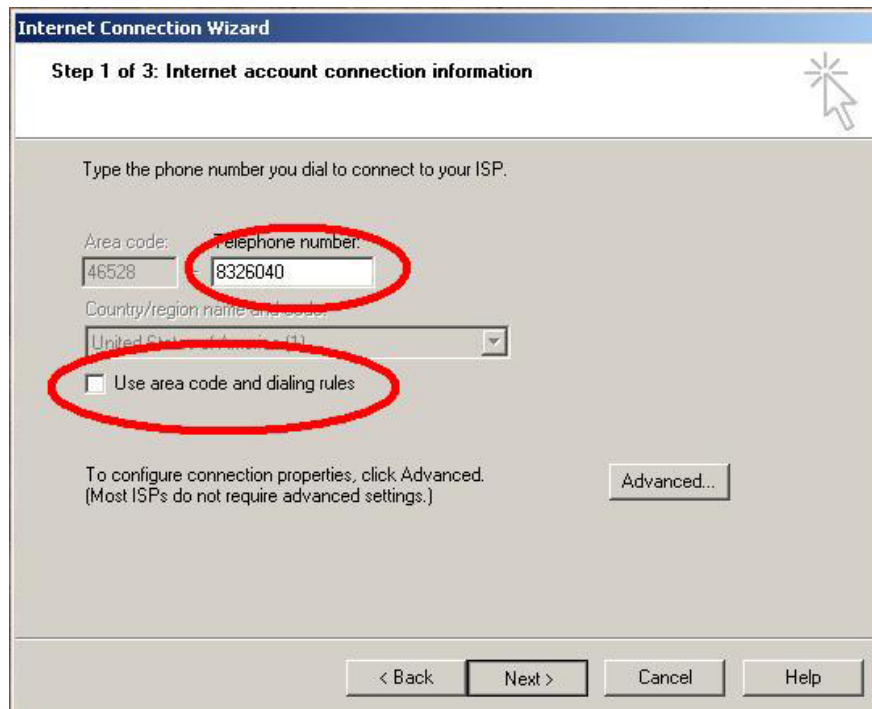
2. In the box that opens up type in "inetwiz" no parentheses.



3. A screen will pop up with the words "Setup your internet connection", click on "Connect using my phone line", and click next.



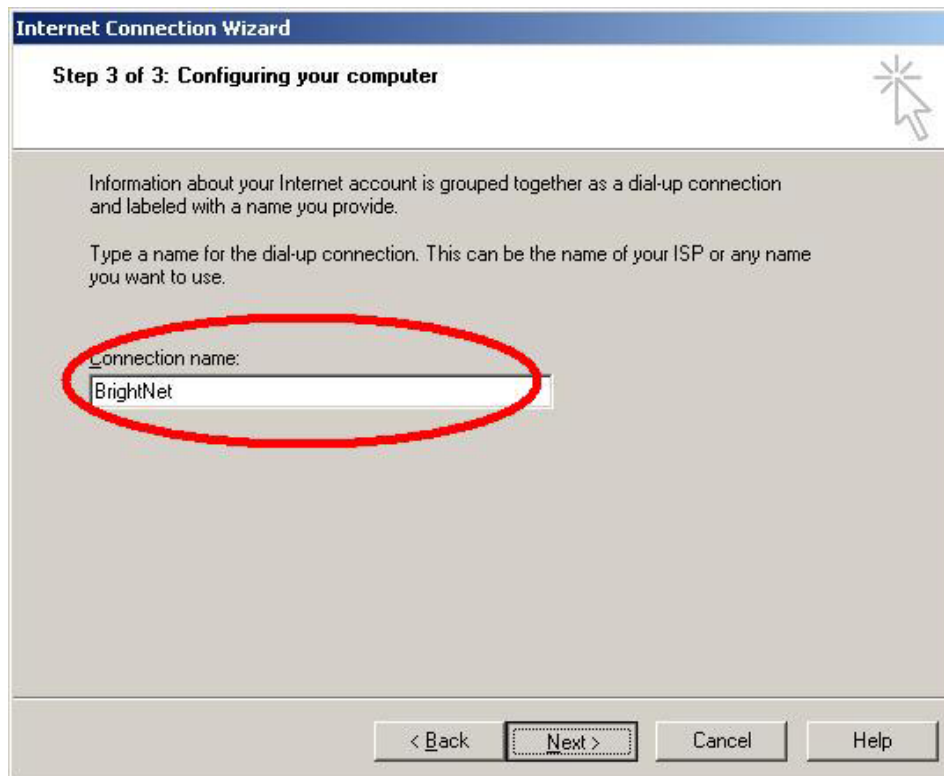
4. The new screen will ask you for a telephone number, type in the number that was given to you on your confirmation letter or call 1-888-831-4678 to get the number, uncheck the box that says: “use area code and dialing rules”, and click next.



5. The next screen will ask you for your username and password, after you have them entered click next.



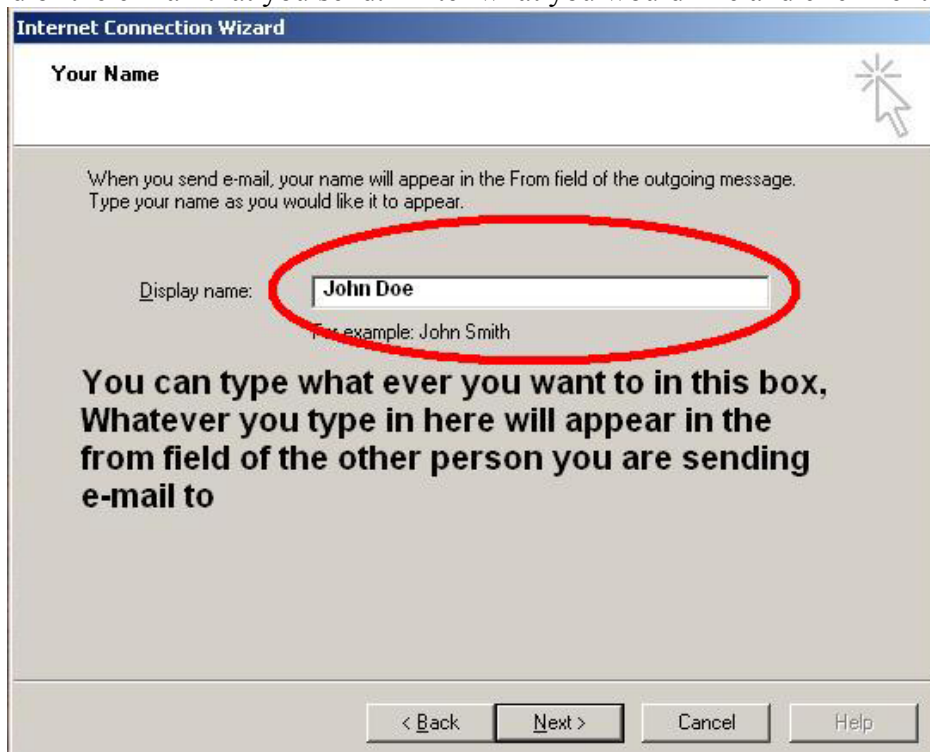
6. The next screen will ask you for a connection name, just type in Brightnet or whatever you want the connection to be called. Click next when you are done.



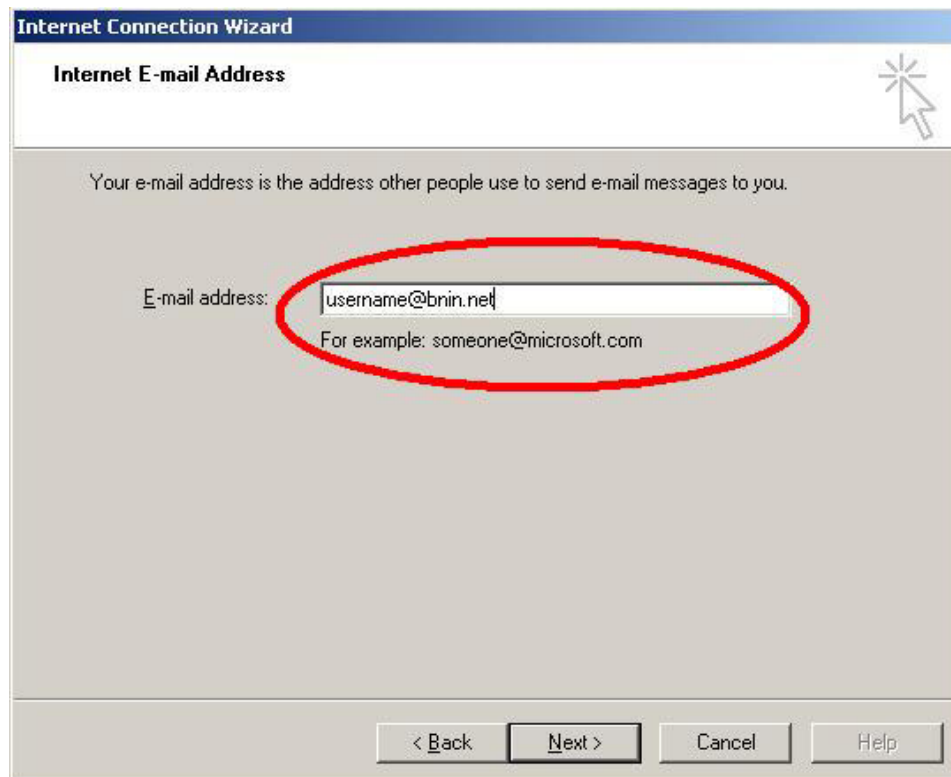
7. The next screen will ask you if you would like to set up an internet mail account, select yes and click next.



8. The next screen will ask you for a display name, whatever you type in there will be in the from field of the e-mail that you send. Enter what you would like and click next.



9. The next screen will ask you for an e-mail address, enter the one you received on your confirmation letter, the e-mail address is just simply your username with @bnin.net tacked onto the end. When you are done click next.



10. The next screen will ask you for your mail servers, at the top make sure it says my incoming mail server is a "POP3". Below that it will say Incoming mail (POP3, IMAP, or HTTP), in this box type in "pop.bnin.net" (no parentheses). Below that is a box that says "An SMTP server is the server that is used for your outgoing e-mail", in this box type in "smtp.bnin.net" (no parentheses). Click next when done.

Internet Connection Wizard

E-mail Server Names

My incoming mail server is a **POP3** server.

Incoming mail (POP3, IMAP or HTTP) server:
pop.bnin.net

An SMTP server is the server that is used for your outgoing e-mail.

Outgoing mail (SMTP) server:
smtp.bnin.net

< Back Next > Cancel Help

11. The next screen will ask you for your password, the account name is already filled in for you, when you are done filling in your password click next.

Internet Connection Wizard

Internet Mail Logon

Type the account name and password your Internet service provider has given you.

Account name: username

Password: password

Remember password

Log on using Secure Password Authentication (SPA)

when you type in your password it will be displayed as stars this is to keep it secret

< Back Next > Cancel Help

12. The next screen is the final one, all you have to do is click finish and your ready to get online by double clicking the “Internet explorer” or the “Outlook express” Icon on your desktop and click connect.

